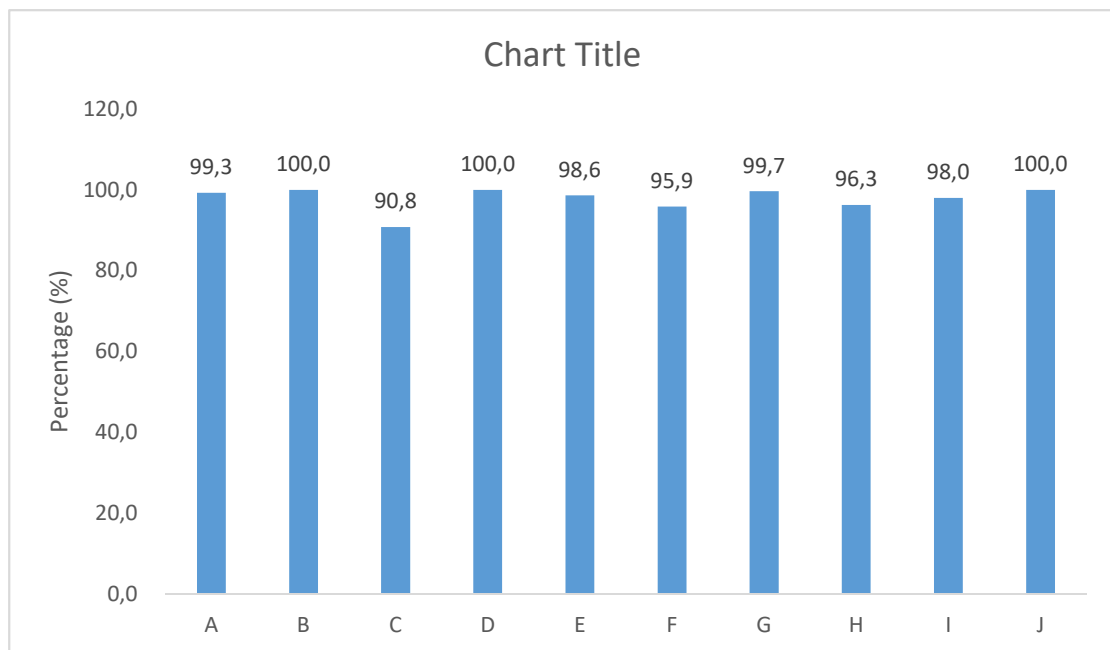


RESULTS OF STUDENT SURVEYS FOR THE EVALUATION OF TEACHING-LEARNING PROCESS AT THE STUDY PROGRAM OF SOIL SCIENCE 2022

(MID-TERM)

The results of student survey for the evaluation of teaching and learning process is presented as follows:



Note:

- A The Semester Learning Plan (SLP) delivered at the beginning of the lecture
- B The lecture material are relevance with the SLP
- C The Course Material are Uploaded on E-Learning before the lecture day
- D The assignments are given in accordance with the course materials or the lesson plans
- E The quiz are given in accordance with the course material or the lesson plan
- F The practicum are carried out in accordance with the lecture material
- G The lecturer are give time/opportunity to ask questions about the lecture material
- H Mid-Term Schedule is in accordance with the Academic Calender
- I The questions for the mid-semester are in accordance with the material in the SLP
- J The number meetings for the Mid-Term are 8 meetings (in accordance with Academic Calender)

FIGURE 1. Data Recapitulation of the Teaching-Learning Process for MID TERM

